



REGIONAL SPECIALISED METEOROLOGICAL CENTRE-TROPICAL CYCLONES, NEW DELHI TROPICAL WEATHER OUTLOOK

DEMS-RSMC TROPICAL CYCLONES NEW DELHI DATED 08.01.2024

TROPICAL WEATHER OUTLOOK FOR NORTH INDIAN OCEAN (THE BAY OF BENGAL AND THE ARABIAN SEA) VALID FOR NEXT 168 HOURS ISSUED AT 0600 UTC OF 08.01.2024 BASED ON 0300 UTC OF 08.01.2024.

BAY OF BENGAL:

YESTERDAY'S TROUGH AT MEAN SEA LEVEL FROM SOUTH SRI LANKA TO WESTCENTRAL BAY OF BENGAL OFF SOUTH ANDHRA PRADESH COAST RUNS FROM SOUTH SRI LANKA TO NORTH COASTAL TAMIL NADU AND EXTENDS UPTO 0.9 KM ABOVE MEAN SEA LEVEL AT 0300UTC OF TODAY, THE 8TH JANUARY, 2024.

SCATTERED LOW AND MEDIUM CLOUDS WITH EMBEDDED INTENSE TO VERY INTENSE CONVECTION LAY OVER SOUTHWEST BAY OF BENGAL ADJOINING EQUATORIAL INDIAN OCEAN SRILANKA & NEIGHBOURHOOD (MINIMUM CLOUD TOP TEMPERATURE IS -85°C). SCATTERED LOW AND MEDIUM CLOUDS WITH EMBEDDED ISOLATED MODERATE TO INTENSE CONVECTION LAY OVER WESTCENTRAL & SOUTHEAST BAY OF BENGAL SOUTH ANDAMAN SEA.

***PROBABILITY OF CYCLOGENESIS (FORMATION OF DEPRESSION) DURING NEXT 168 HRS:**

24 HOURS	24-48 HOURS	48-72 HOURS	72-96 HOURS	96-120 HOURS	120-144 HOURS	144-168 HOURS
NIL	NIL	NIL	NIL	NIL	NIL	NIL

***NOTE: EVERY 24HR FORECAST IS VALID UPTO 0300 UTC (0830 IST) OF NEXT DAY**

ARABIAN SEA:

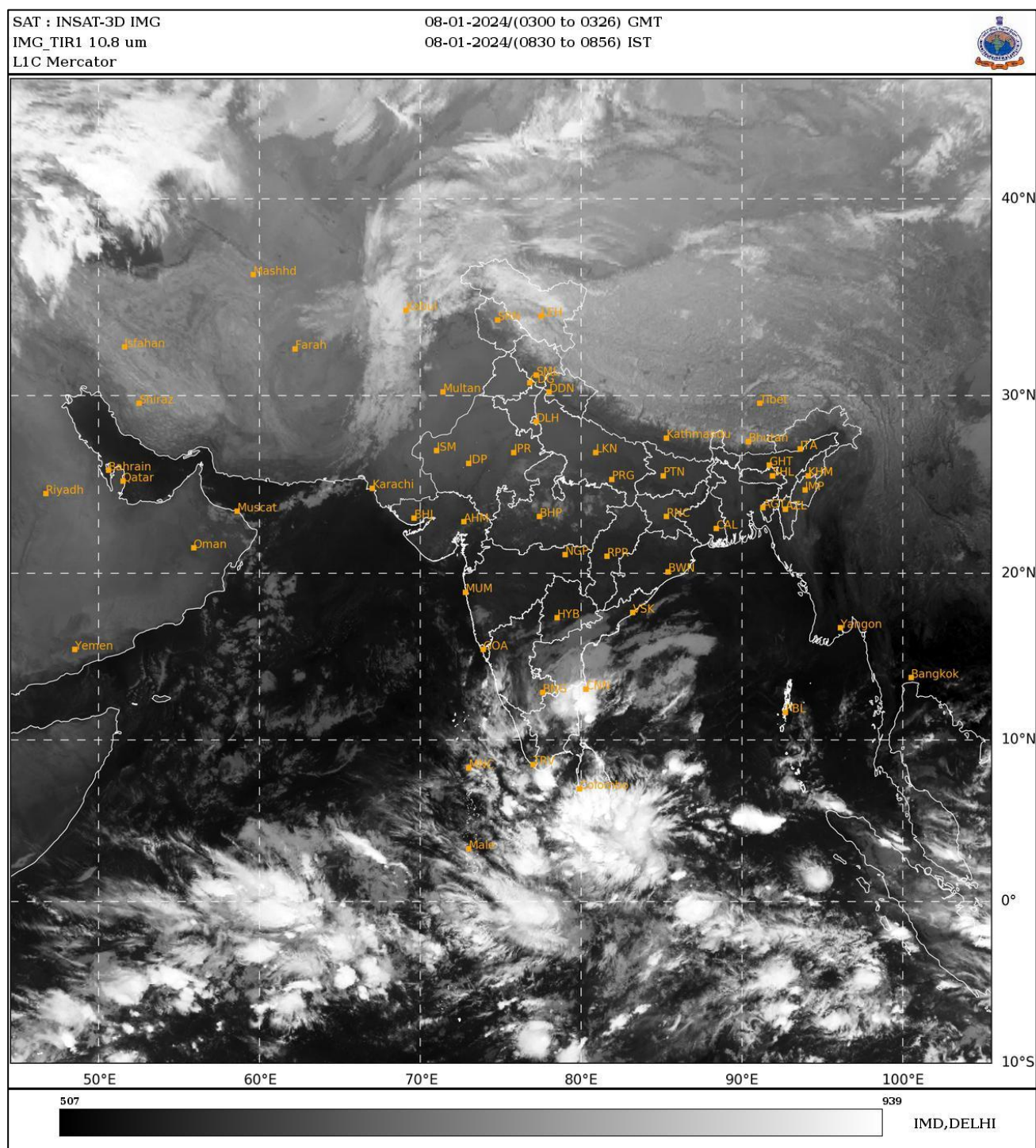
YESTERDAY'S CYCLONIC CIRCULATION OVER SOUTHEAST ARABIAN SEA AT 1.5KM ABOVE MEAN SEA LEVEL PERSISTED OVER THE SAME REGION AT 0300UTC OF TODAY, THE 8TH JANUARY, 2024. YESTERDAY'S TROUGH FROM THE CYCLONIC CIRCULATION OVER SOUTHEAST ARABIAN SEA TO GUJARAT COAST AT 1.5 KM ABOVE MEAN SEA LEVEL HAS BECOME LESS MARKED AT 0300UTC OF TODAY, THE 8TH JANUARY, 2024.

BROKEN LOW AND MEDIUM CLOUDS WITH EMBEDDED INTENSE TO VERY INTENSE CONVECTION LAY OVER COMORIN AREA (MINIMUM CLOUD TOP TEMPERATURE IS -80°C). SCATTERED LOW AND MEDIUM CLOUDS WITH EMBEDDED MODERATE TO INTENSE CONVECTION LAY OVER SOUTHEAST ARABIAN SEA OFF KARNATAKA-KERALA COASTS & MALDIVES AREA.

***PROBABILITY OF CYCLOGENESIS (FORMATION OF DEPRESSION) DURING NEXT 168 HRS:**

24 HOURS	24-48 HOURS	48-72 HOURS	72-96 HOURS	96-120 HOURS	120-144 HOURS	144-168 HOURS
NIL	NIL	NIL	NIL	NIL	NIL	NIL

*NOTE: EVERY 24HR FORECAST IS VALID UPTO 0300 UTC (0830 IST) OF NEXT DAY



Cloud distribution: (a) Isolated: <25%, Scattered:25-50%, Broken: 51-75%, Solid:>75%, Convection Intensity: (a) Weak: Cloud Top Temperature (CTT) >-25°C, (b) Moderate: CTT: - 25°C to -40°C, (c) Intense: CTT: - 41°C to -70°C and (d) Very Intense: : Less than -70°C
PROBABILITY OF CYCLOGENESIS (FORMATION OF DEPRESSION):NIL: 0%, LOW: 1-33%, , MODERATE: 34-66% AND HIGH: 67-100%
This is a guidance Bulletin for WMO/ESCAP Panel Member countries. Visit respective National websites for Country specific Bulletins